

Use of a State-Wide High-Impact Tutoring Program to Address the Teacher Pipeline

Christy Borders, Illinois State University

Carrie Anna Courtad, Illinois State University

Francis Godwyll, Illinois State University

Stephanie Bernoteit, Illinois Board of Higher Education

John Failla, Pearl

Authors: Borders, C., Failla, J., Bernoteit, S., Barrett, J., Courtad, C., Godwyll, F., Kang, G., Kang, J., MacPhee, D., Mertens, S., Quast, E., & Wu., S.





This Photo by Unknown author is licensed under [CC BY-SA-NC](https://creativecommons.org/licenses/by-sa/4.0/).

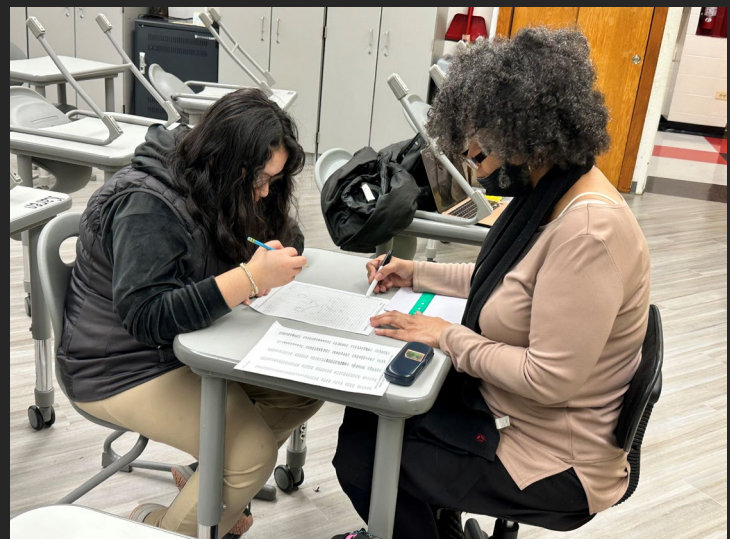


This Photo by Unknown author is licensed under [CC BY-SA-NC](https://creativecommons.org/licenses/by-sa/4.0/).



This Photo by Unknown author is licensed under [CC BY-SA-NC](https://creativecommons.org/licenses/by-sa/4.0/).





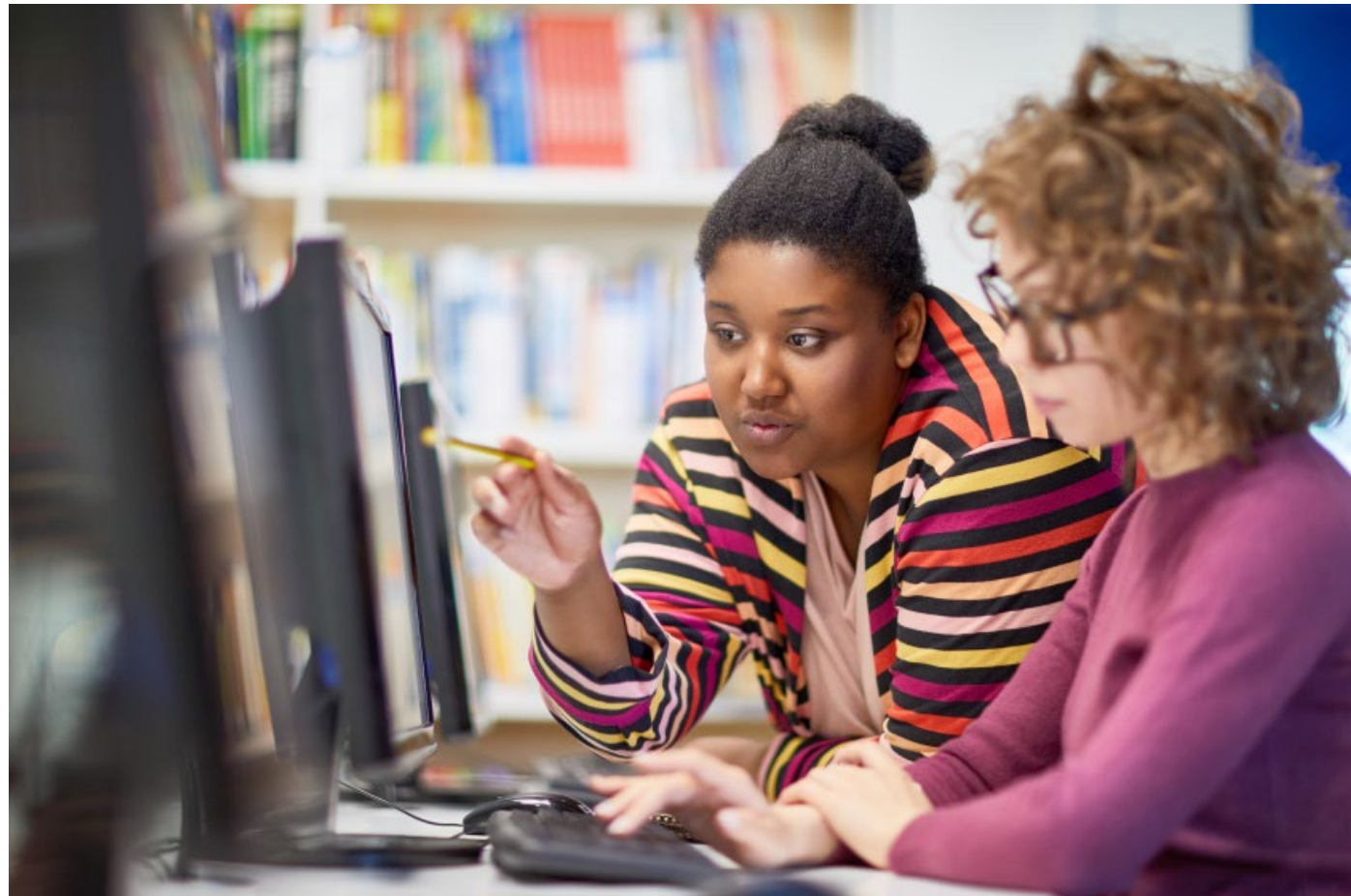


Strategies for a Thriving Illinois

1. Support learning renewal and student supports

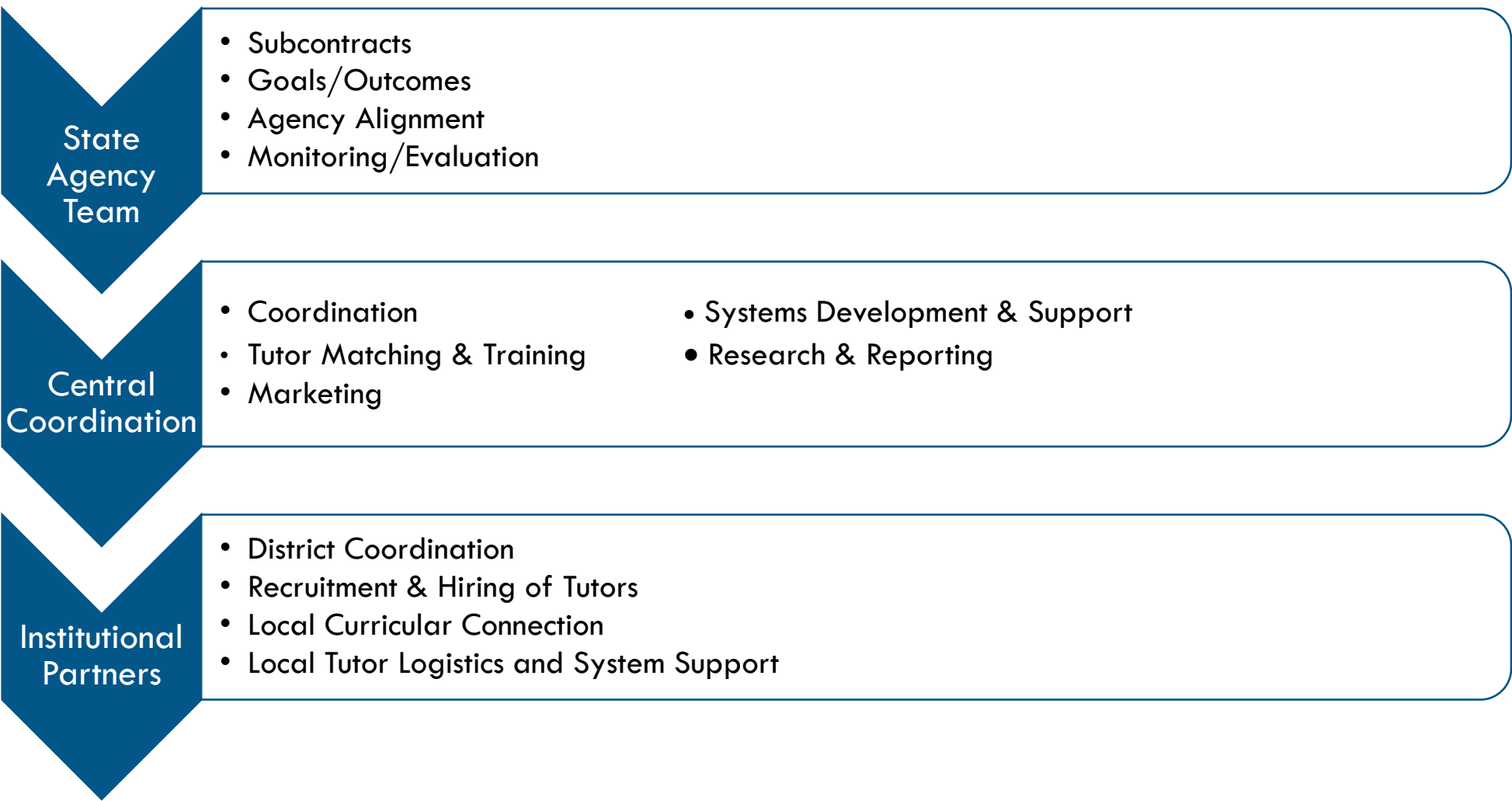


Close the equity gaps for students who have been left behind.





Illinois Tutoring Initiative Coordination





Partners



Illinois
State Board of
Education



ILLINOIS STATE
UNIVERSITY

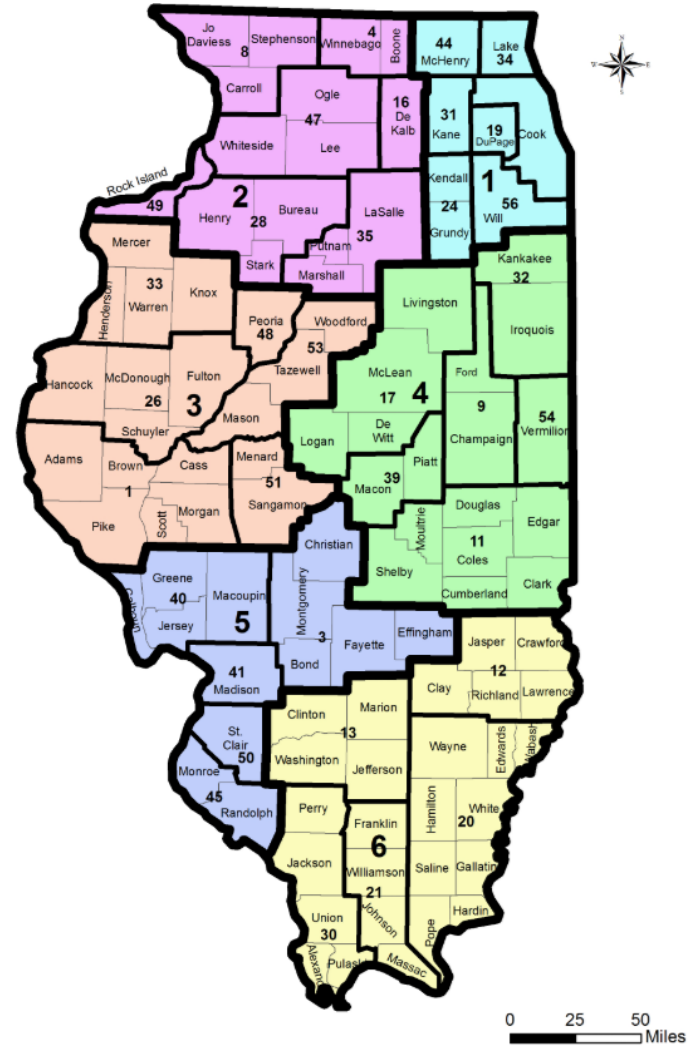
SIUe

SIU
CARBONDALE



Northern Illinois University





Illinois Tutoring Initiative Service Areas



Homework Help vs. High-Impact Tutoring

Homework Help | High-Impact Tutoring

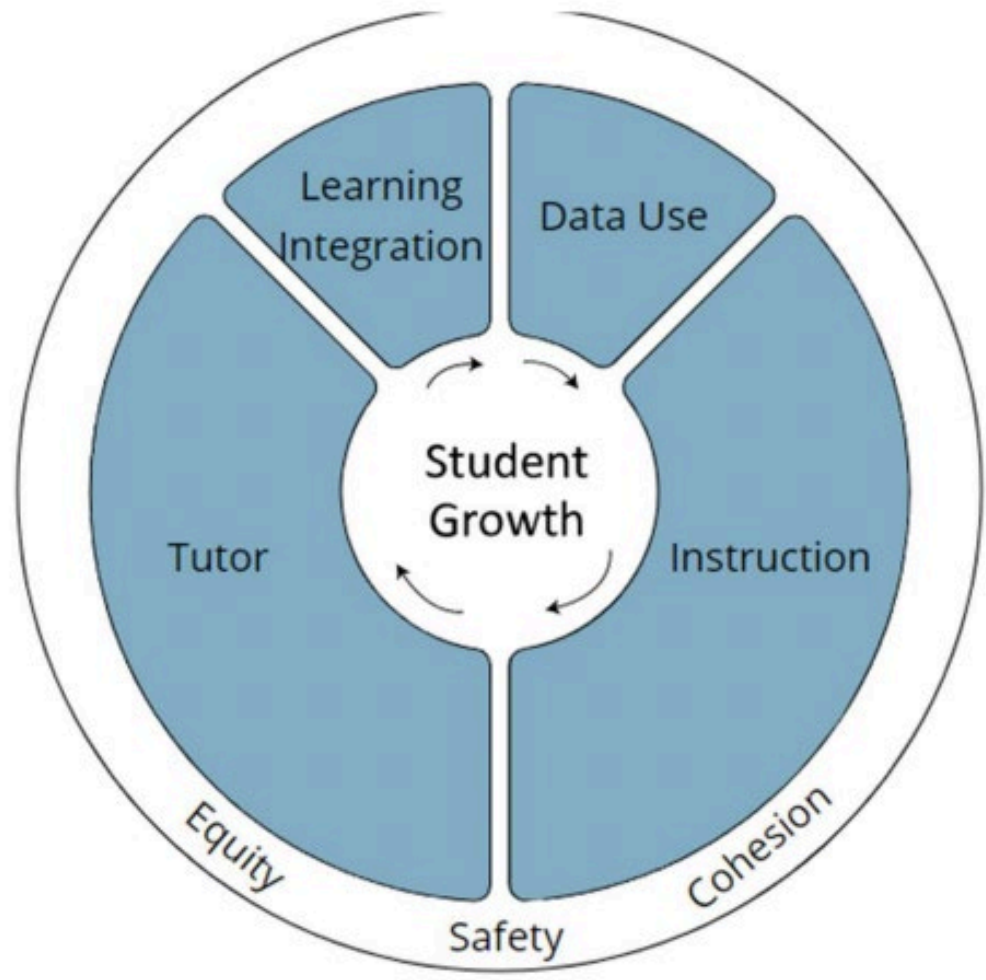
Rapport-building
Support independent practice

Rapport-building
Review previous content
Introduce aim for the day
New content
Guided practice
Checks for understanding
Independent practice





High-Impact Tutoring





High Impact Tutoring: *The Basics*



Evidence-Based



Session Time



Small Groups



Sustained and Strong Relationships



Close Monitoring of Student Knowledge and Skills



Alignment with School Curriculum



Training and Support for Tutors



Implementation to Date

Spring/Summer
2022

- 4 Regions
- 8 Districts
- 15 Schools
- 49 Tutors
- 119 Students

Snapshot Fall
2022

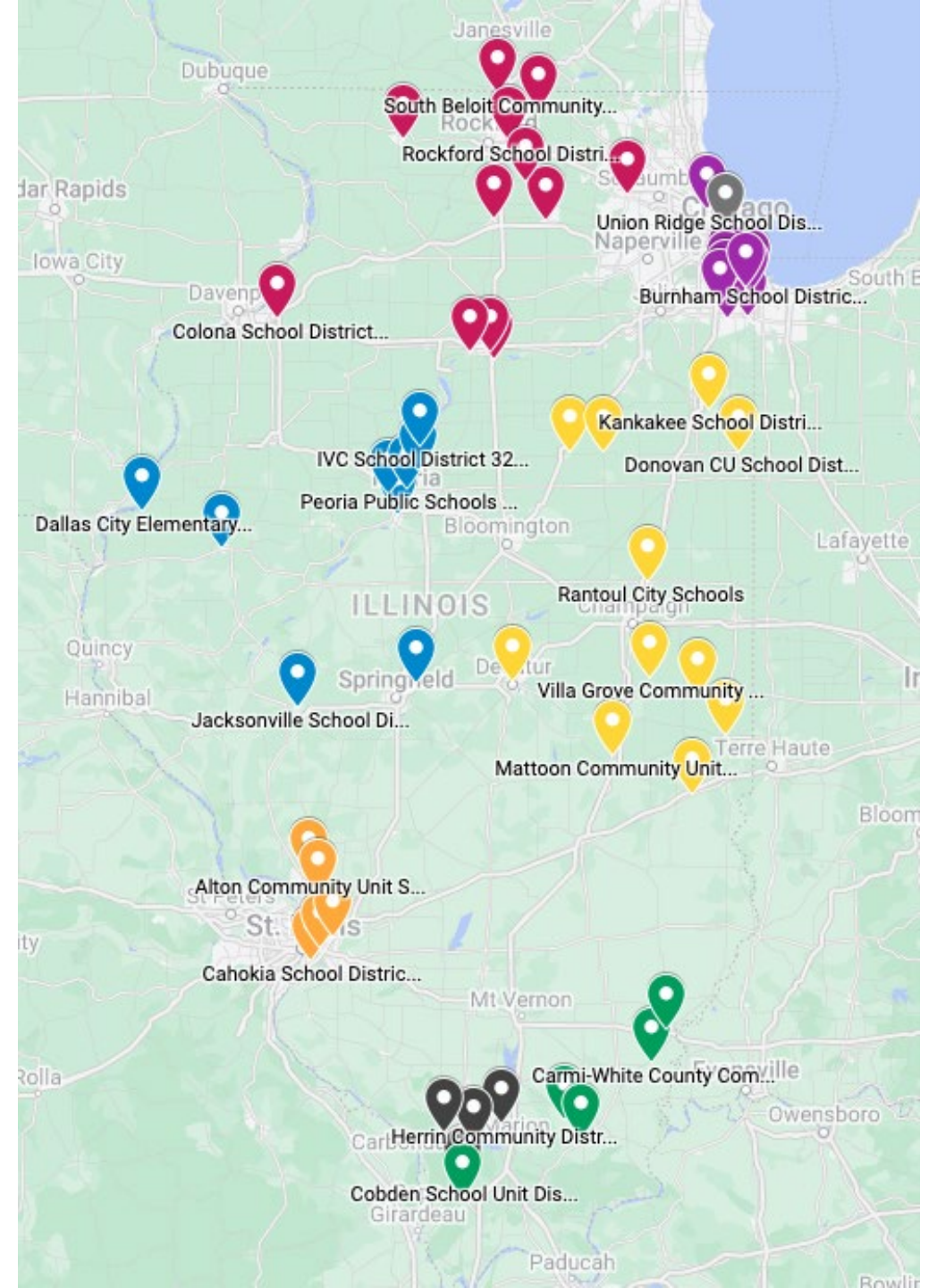
- 8 Regions
- 41 Districts
- 84 Schools
- 421 Tutors
- 1,209 Students

December 7,
2022

- 8 Regions
- 45 Districts
- 92 Schools
- 463 tutors with 511 assignments
- 1,290 Students

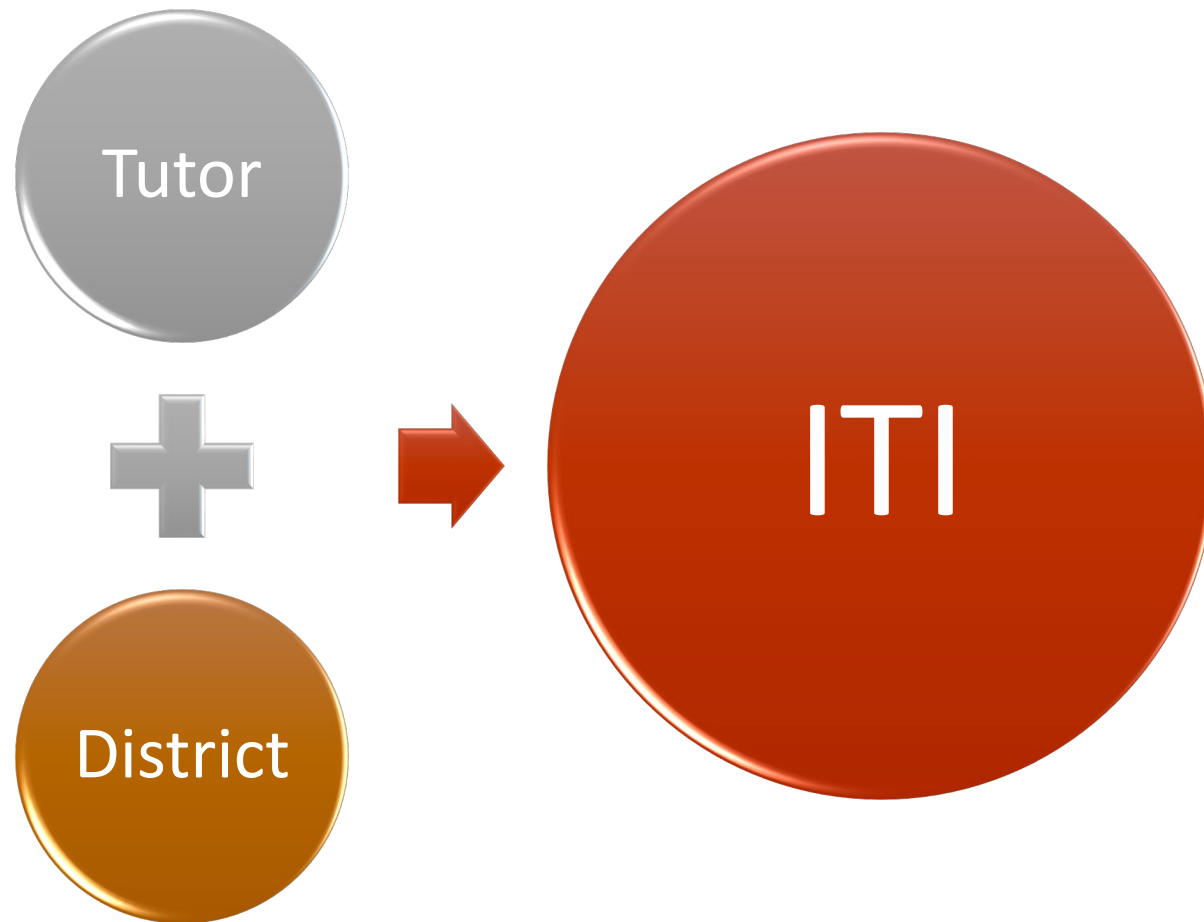
February 17,
2023

- 8 Regions
- 48 Districts
- 120 schools
- 636 tutors with 801 assignments
- 1,826 students





Process





Tutor Journey



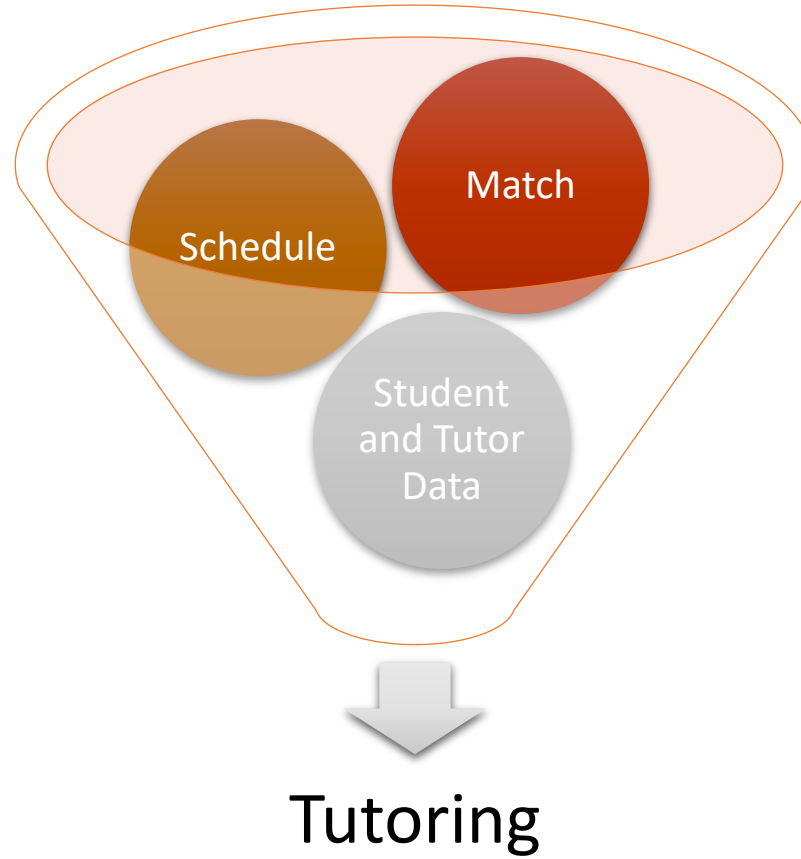


District Journey





ITI Process





Outcomes

- Reading
 - 5 out of 5 tests
- Math
 - 3 out of 5 tests
- Higher percentage of children tutored made positive growth from fall to winter



100%

Region 4, Donovan School



Student-Tailored

- Tutoring in *your* language



Area 2

LaSalle, IL





Community Volunteer to Tutor

- Seasoned volunteers are now being paid to tutor for 4 days a week



ELITE Academy, an
alternative school

Peoria, IL



From Quiet and Hesitant to Class Leader

- Tutor pre-teaches the student the content
- Girl is now confident and engages well in class





Custodian Turned Tutor

- Building academic and social/emotional opportunities with students





Ready, Set, GO

- Advanced material for students who are ready
- Enrichment
- Academic spectrum





Grow Your Own

- Angi returns to her own school to tutor math
- Plans to teach in this school district following graduation



Questions?
Comments?
Ideas?

